



*Introduction of **Geospatial Information Research Division***

**Korea Research Institute for Human Settlements**



## About **KRIHS...**

The KRIHS strives to promote sustainable development by its contribution to national territorial policies

Founded in 1978, KRIHS has played a pivotal role in national territorial policy development with researches in balanced national development, housing stability, infrastructure development and geospatial information system. The policies KRIHS developed and suggested has contributed to enhancing the quality of life of the people.

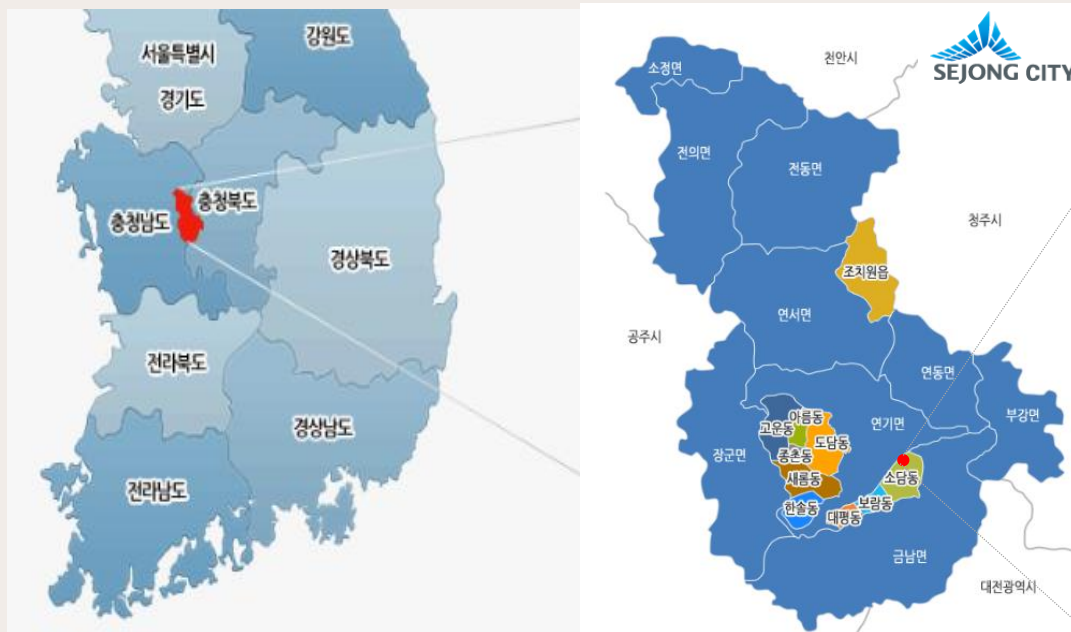
With the enactment of the Act on the Establishment, Management and Promotion of Government-Sponsored Research Institutes in 1999, KRIHS has become one of research institutes under the supervision of the Korea Council of Economic and Social Research Institutes (KCESRI) which is a supervisory body specially created to oversee those research institutes involved in the fields of economics and social studies under the Prime Minister.

The main tasks of KRIHS are to develop long-term and short-term plans and policies to lead to more efficient use of land resources and to restructure imbalanced spatial structures. KRIHS carries out various research projects in the areas of national territorial development, environment, regional and urban development, infrastructure, land use, transportation and GIS.



## Where is **KRIHS**...

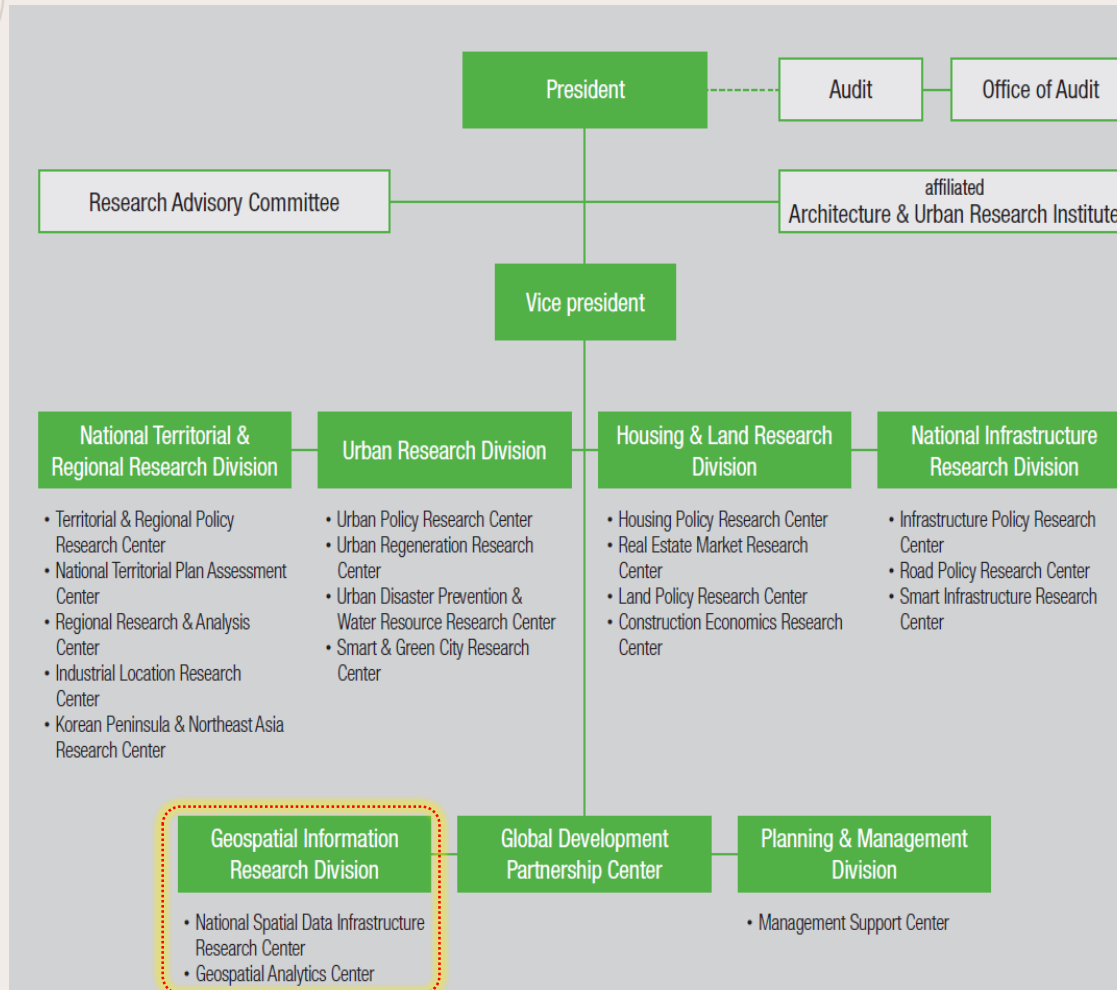
Located in Sejong National Research Complex, Sejong-si



[KRIHS Video Clip] <https://www.youtube.com/watch?v=XDS11JV5D9Y>



## Organization of KRIHS : Geospatial Information Research Division



The Geospatial Information Research Division investigates methods, technologies, and policies through which geospatial information of the Korea territory can be produced, analyzed, and utilized in an efficient manner.

### ★ Major research areas :

- Policies of NSDI
- Analysis of geospatial information industries and market changes
- Digital Twin and Smart City
- Fusion of ICT technologies with GIS
- Techniques for geospatial analysis and modeling
- Remote sensing methods
- KOPSS(Korea Planning Support System)
- Geospatial big data
- Dynamic temporal geospatial data system



## Research Projects of **Geospatial Information Research Division**

### ★ National Spatial Data Infrastructure(NSDI) Research Center 空間情報政策センター

- The 6<sup>th</sup> National Spatial Data Infrastructure(NSDI) Master Plan
- Policy evaluation and making annual action plans of GIS project(central/local government)
- R&D projects of open source S/W
- Digital Twin, CPS, block chain researches in geospatial information field
- ODA projects

### ★ Geospatial Analytics Center 国土情報分析センター

- Developing indicators & index for territorial monitoring
- GI Application researches related to EBPM (national territory plan, regional plan, urban plan)
- Geospatial big data, flow big data, geo AI, remote sensing
- Other studies of geospatial information analysis and convergence



## MOU with KRIHS & CSIS(2016)

AGREEMENT ON ACADEMIC EXCHANGE  
BETWEEN  
CENTER FOR SPATIAL INFORMATION SCIENCE, THE UNIVERSITY OF  
TOKYO  
AND  
KOREA RESEARCH INSTITUTE FOR HUMAN SETTLEMENTS

Center for Spatial Information Science (CSIS), the University of Tokyo (Japan) and Korea Research Institute for Human Settlements (KRIHS) Republic of Korea (hereinafter referred to as the "parties"), in the firm conviction that academic exchange between the parties will promote academic research and other activities, hereby conclude the following Agreement.

Article 1. The parties agree to implement exchanges and other activities in areas of academic research of mutual interest through the following.

- (1) Exchange of faculty and administrative staff and researchers for the purpose of facilitating teaching and research and Utilization of programs such as Non-residential Visiting Fellow with appropriate financial support for effective collaboration, consultation and mutual participation.
- (2) Conducting collaborative research and publication activities to foster geospatial information application and illuminate the role of anchor institutions globally.
- (3) Exchanging of invitations to scholars for lectures, meetings and talks to sponsor conferences, publications, public interest events and expert roundtables, annual geospatial information forum, associates program instructional and other supportive programs.
- (4) Advancing by supporting foundational research for the analysis of geospatial information, sharing of experiences and exchanging of data and other information relevant to the interests of parties.

Article 2. Actual projects to be implemented for the realization of specific exchange activities as defined in the preceding article shall be...

Article 3. In the case that reser...  
property rights are expected to a...  
under the terms of Article 1 abov...  
a separate document the condit...  
rights so arising, prior to the...  
accordance with the policies of e...

Article 4. This Agreement is vali...  
signature affixed below by the p...  
additional period of five years...  
months' advance notice in writin...

Article 5. This Agreement is crea...  
being deemed original.

The parties hereby establish th...  
dates below.

The University of Tokyo  
Center for Spatial Informatio...



● 경제·인문사회연구회 미래사회 협동연구총서 16-17-01 ●

### 인구감소시대의 지역문제 진단을 위한 공간 빅데이터 활용방안 연구

Geospatial Big Data Analytics for the Diagnosis of Regional Wellbeing  
In an Era of Decreasing Population

국토연구원 이영주·황명화 외



경제·인문사회연구회  
NATIONAL RESEARCH COUNCIL FOR  
ECONOMICS, HUMANITIES AND SOCIAL SCIENCES



## *Today's Agenda*

- Developing Grid-based Spatial Indicators for The Territorial Monitoring
- Application of Accessibility Index for Monitoring Quality of Life
- Design on Framework of Interactive Territory Monitoring Report

"We look forward to continuous research cooperation and collaborations in the future."

KRIHS



国土研究院



Csis

東京大学 空間情報科学研究センター

Center for Spatial Information Science The University of Tokyo

Contact to : Young-Joo LEE ([leeyj@krihs.re.kr](mailto:leeyj@krihs.re.kr))

Director, Geospatial Analytics Center

Research Fellow, Geospatial Information Research Division

Korea Research Institute for Human Settlements